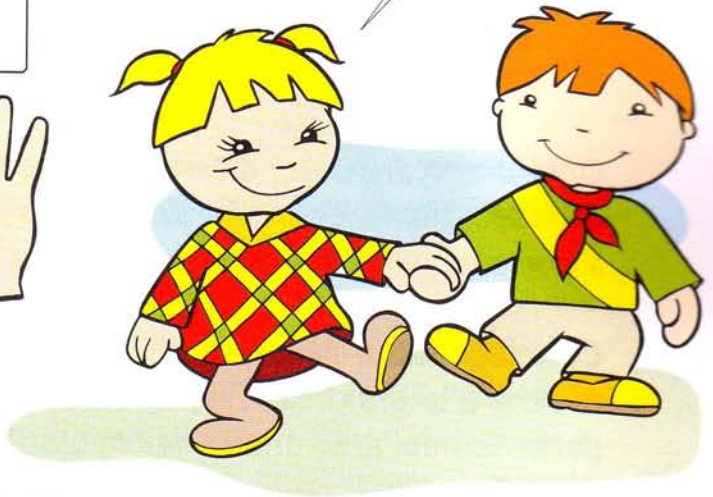
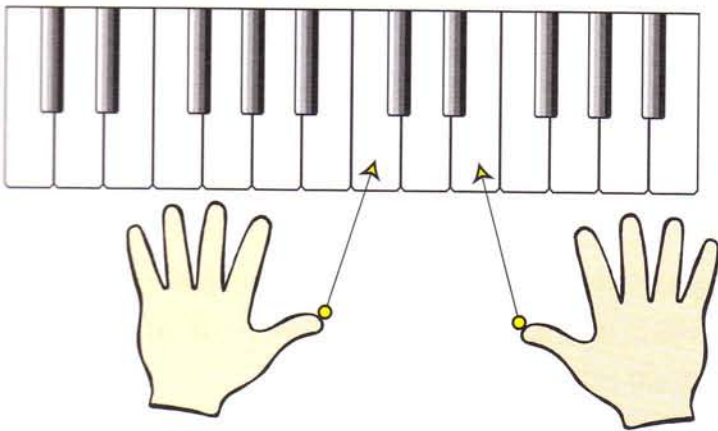


Insieme

La posizione delle mani, è la stessa che c'era alla fine del libro precedente!



1
uno due tre

Leggi bene le note prima di suonare!

1
uno due tre

uno due tre

Piccola variazione

Osserva le note della pagina accanto e scopri le differenze con questa musica.



A girl with braids and a dog are standing on a musical staff. The staff has a treble clef and a 3/4 time signature. The melody consists of quarter notes: G4, A4, B4, C5, B4, A4, G4, and a half note F4. The bass line has a 1/2 note G3, a 1/4 note A3, a 1/2 note B3, and a 1/4 note C4. The lyrics '1 uno due tre' are written below the first measure.

Le due musiche si assomigliano molto, ecco perché questa si chiama **variazione!**



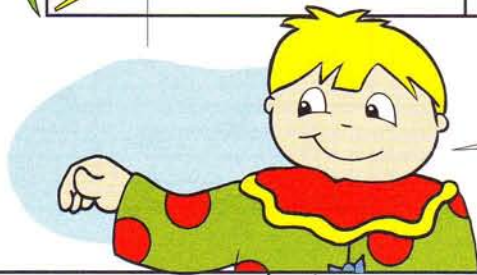
A girl with a flower in her hair and a vase of flowers are standing on a musical staff. The staff has a treble clef and a 3/4 time signature. The melody consists of quarter notes: G4, A4, B4, C5, B4, A4, G4, and a half note F4. The bass line has a 1/2 note G3, a 1/4 note A3, a 1/2 note B3, and a 1/4 note C4. The lyrics 'uno due tre' are written below the second and third measures.

Il giocoliere

Leggi bene le note prima di cominciare a suonare e **conta a voce alta**.



Musical notation for the first system. It consists of two staves: a treble clef staff and a bass clef staff. The time signature is 2/2. The melody in the treble clef starts with a quarter note 'u', followed by a quarter note 'no', and then a half note 'du - e'. The bass clef accompaniment starts with a half note '1' (representing the number one), followed by a half note '1' (representing the number one), and then a half note '1' (representing the number one). The lyrics 'u - no du - e' are written below the treble clef staff. A small illustration of a yellow and blue bowling ball is on the left.



Tieni le dita curve e diventerai bravo!

Musical notation for the second system. It consists of two staves: a treble clef staff and a bass clef staff. The treble clef staff contains a sequence of four quarter notes: 'u', 'no', 'du', and 'e'. The bass clef staff contains a sequence of four quarter notes: '1', '1', '1', and '1'.

Musical notation for the third system. It consists of two staves: a treble clef staff and a bass clef staff. The treble clef staff contains a sequence of four quarter notes: 'u', 'no', 'du', and 'e'. The bass clef staff contains a sequence of four quarter notes: '1', '1', '1', and '1'. A small illustration of a blue jester with a yellow and blue hat is on the right, and a small illustration of a red and yellow bowling ball is on the bottom right.



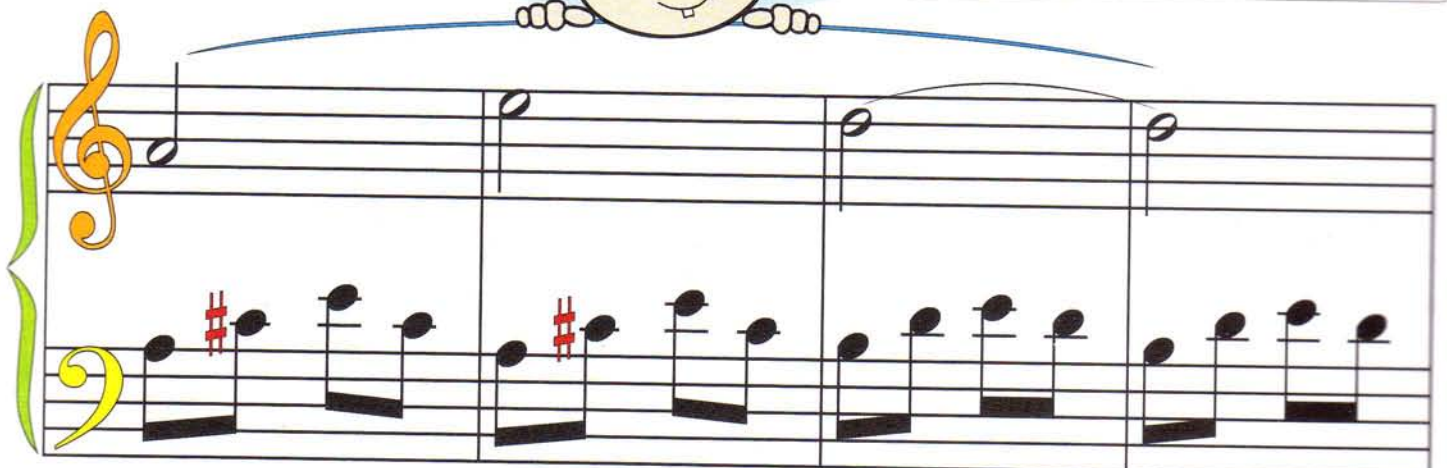
Sul monopattino

Il do, **resta diesis** nella stessa battuta!



A musical score for a piece titled "Sul monopattino". The score is written on a grand staff with a treble clef on the top line and a bass clef on the bottom line. The time signature is 2/4. The key signature has one sharp (F#). The music starts with a treble clef, a 2/4 time signature, and a mezzo-forte (mf) dynamic marking. The melody in the treble clef consists of four measures: a half note G4, a half note A4, a half note B4, and a half note C5. The bass line consists of four measures: a half note G2, a half note A2, a half note B2, and a half note C3. The first measure of the bass line has a sharp sign above the G note. The second measure has a sharp sign above the A note. The third and fourth measures have sharp signs above the B and C notes respectively. A boy with yellow hair and a dog are peeking over the top of the staff. A bicycle is on the left side of the staff.

Attento alla **legatura di valore**!



A musical score for a piece titled "Sul monopattino". The score is written on a grand staff with a treble clef on the top line and a bass clef on the bottom line. The time signature is 2/4. The key signature has one sharp (F#). The music starts with a treble clef, a 2/4 time signature, and a mezzo-forte (mf) dynamic marking. The melody in the treble clef consists of four measures: a half note G4, a half note A4, a half note B4, and a half note C5. The bass line consists of four measures: a half note G2, a half note A2, a half note B2, and a half note C3. The first measure of the bass line has a sharp sign above the G note. The second measure has a sharp sign above the A note. The third and fourth measures have sharp signs above the B and C notes respectively. A girl with yellow pigtails is peeking over the top of the staff.

